

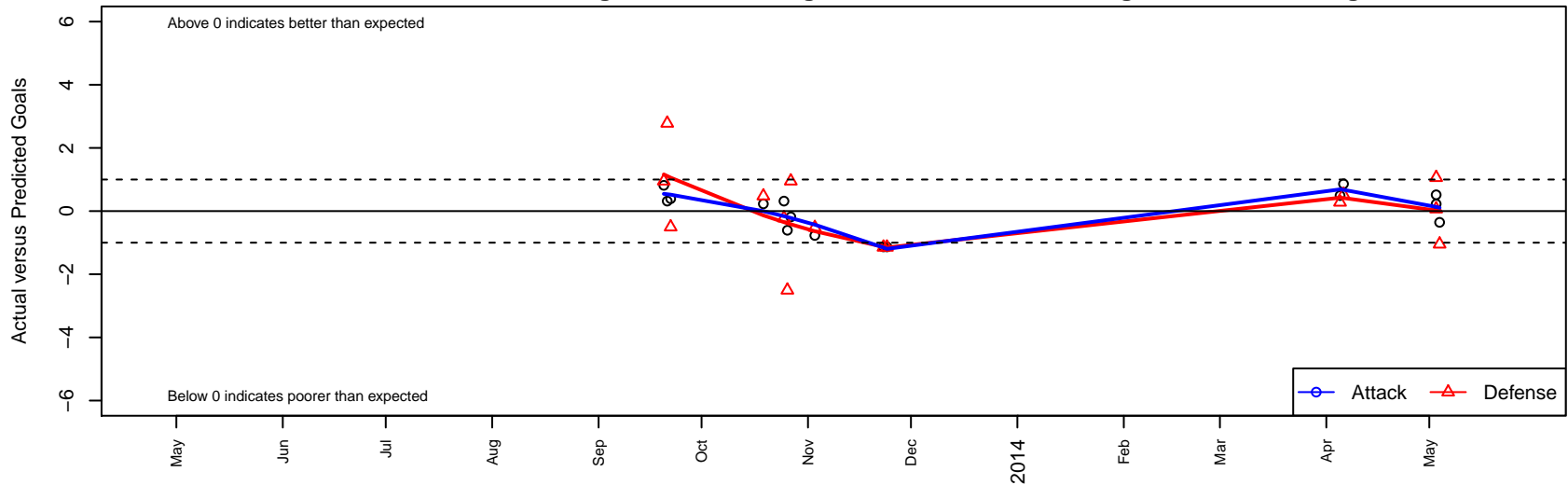
Sporting Blue Valley ECNL G99

Venues played:
ECNL U14

G99 total strength=1465
 attack=14.01 defense=7.19
 alt names used:
 Sporting Blue Valley ECNL U14



Sporting Blue Valley ECNL G99
 Dots are actual minus expected GF (blue circles) and GA (red triangles).
 Blue line is smoothed change in attack strength. Red is smoothed change in defense strength.



	date	home		away		venue	pred.home	pred.away
16992	2014-05-04	Sporting Blue Valley ECNL G99	0	Lonestar SC ECNL G99	4	ECNL U14	0.36	2.95
16927	2014-05-03	Sporting Blue Valley ECNL G99	1	Dallas Texans ECNL G99	2	ECNL U14	0.48	3.06
16953	2014-05-03	AHFC ENCL G99	2	Sporting Blue Valley ECNL G99	1	ECNL U14	2.07	0.77
16626	2014-04-06	Minnesota Thunder Academy ECNL G99	0	Sporting Blue Valley ECNL G99	4	ECNL U14	0.52	3.14
16563	2014-04-05	Michigan Hawks ECNL G99	5	Sporting Blue Valley ECNL G99	1	ECNL U14	5.28	0.51
15560	2013-11-24	Sporting Blue Valley ECNL G99	0	SLSG-Metro ECNL G99	4	ECNL U14	1.13	2.86
15506	2013-11-23	Sporting Blue Valley ECNL G99	0	SLSG-Metro ECNL G99	4	ECNL U14	1.13	2.86
15155	2013-11-03	Sporting Blue Valley ECNL G99	0	SLSG ECNL G99	2	ECNL U14	0.77	1.48
14953	2013-10-27	Colorado Rush ECNL G99	0	Sporting Blue Valley ECNL G99	1	ECNL U14	0.95	1.18
14846	2013-10-26	Colorado Storm ECNL G99	6	Sporting Blue Valley ECNL G99	0	ECNL U14	3.50	0.61
14830	2013-10-25	Real Colorado ECNL G99	4	Sporting Blue Valley ECNL G99	1	ECNL U14	3.78	0.68
14661	2013-10-19	Sporting Blue Valley ECNL G99	1	SLSG ECNL G99	1	ECNL U14	0.77	1.48
13906	2013-09-22	Sporting Blue Valley ECNL G99	1	Colorado Storm ECNL G99	4	ECNL U14	0.61	3.50
13778	2013-09-21	Sporting Blue Valley ECNL G99	1	Real Colorado ECNL G99	1	ECNL U14	0.68	3.78
13753	2013-09-20	Sporting Blue Valley ECNL G99	2	Colorado Rush ECNL G99	0	ECNL U14	1.18	0.95